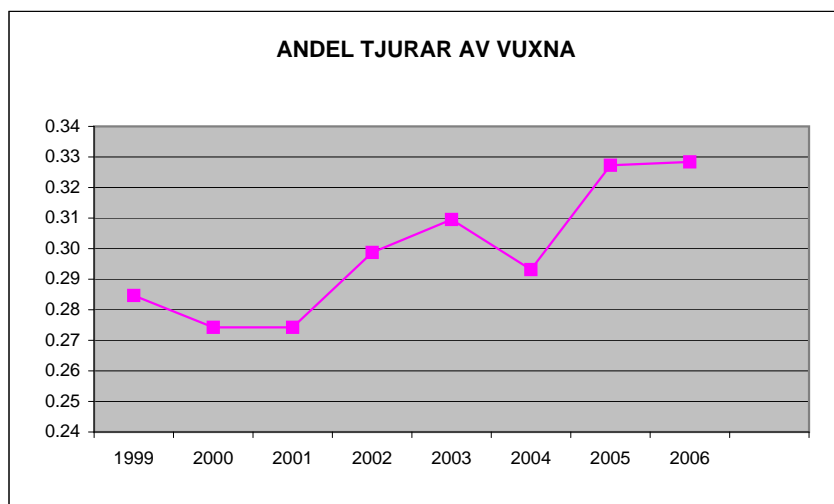
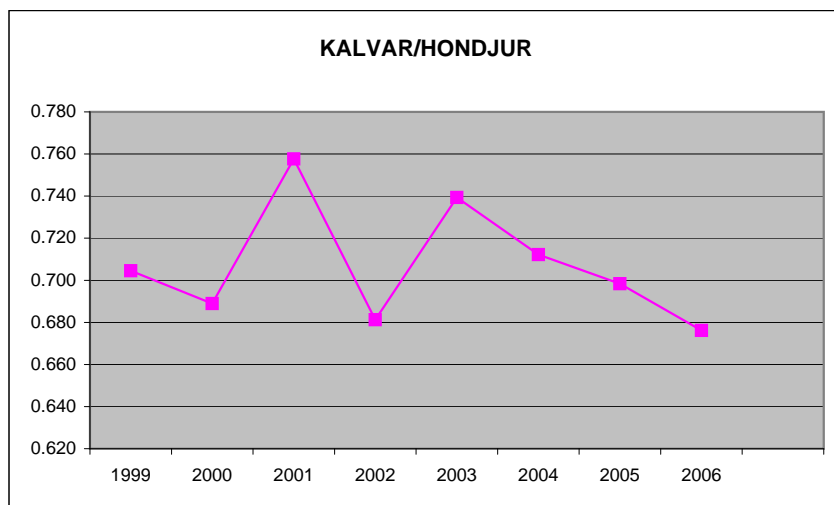
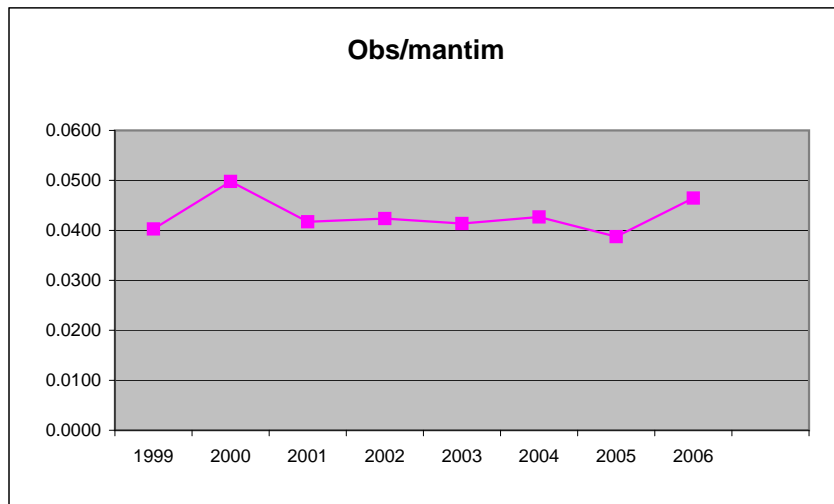


SKÅNE

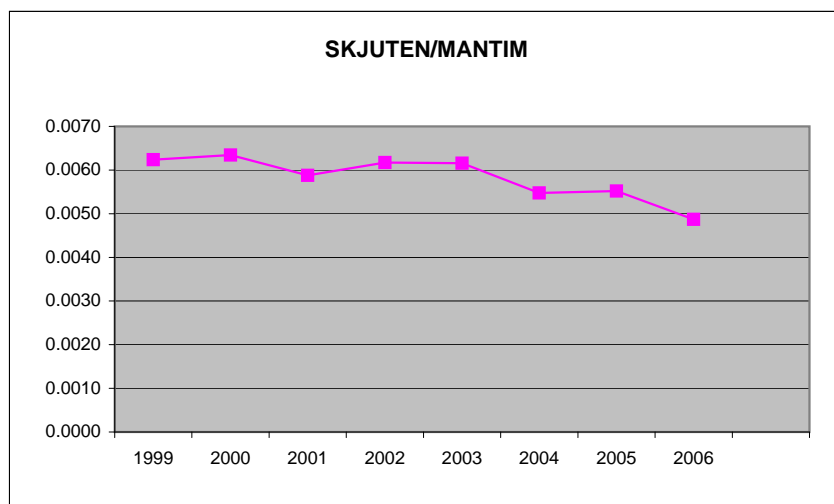
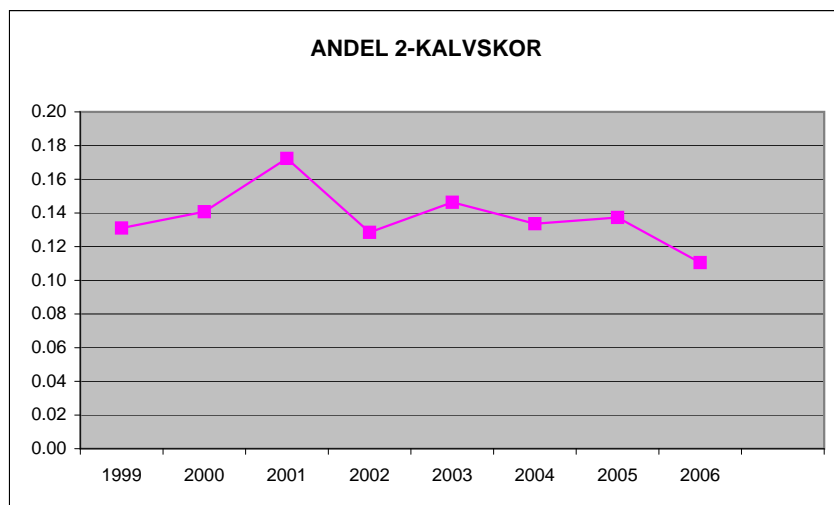
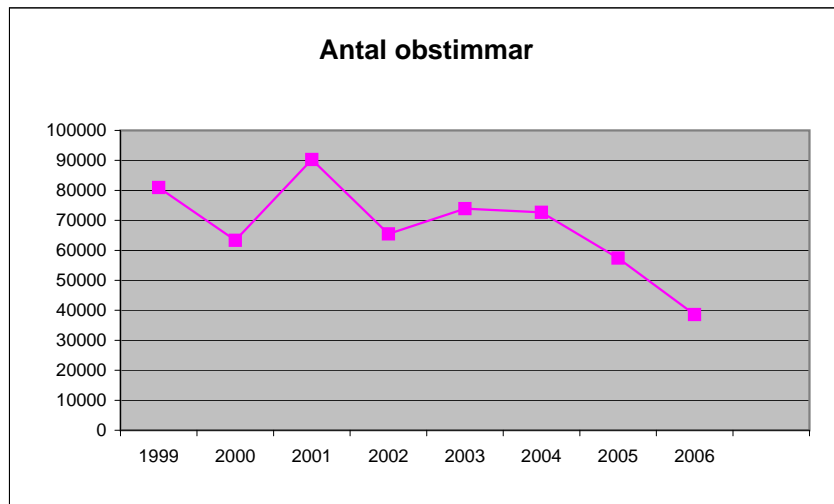
	Obs/ mantim	Antal obstimmar	Kalvar/ hondjur	Andel 2-kalvskor	Andel tjur av vuxna
1999	0.0403	80974	0.705	0.13	0.28
2000	0.0498	63352	0.689	0.14	0.27
2001	0.0417	90302	0.758	0.17	0.27
2002	0.0424	65472	0.681	0.13	0.30
2003	0.0414	73902	0.739	0.15	0.31
2004	0.0427	72680	0.712	0.13	0.29
2005	0.0387	57422	0.698	0.14	0.33
2006	0.0465	38594	0.676	0.11	0.33

Skåne



ar	Skjuten/ mantim	Andel kor utan kalv
l	0.0062	0.45
	0.0063	0.47
	0.0059	0.44
	0.0062	0.47
	0.0062	0.43
	0.0055	0.44
	0.0055	0.47
	0.0049	0.47

Skåne



M

Skåne

